

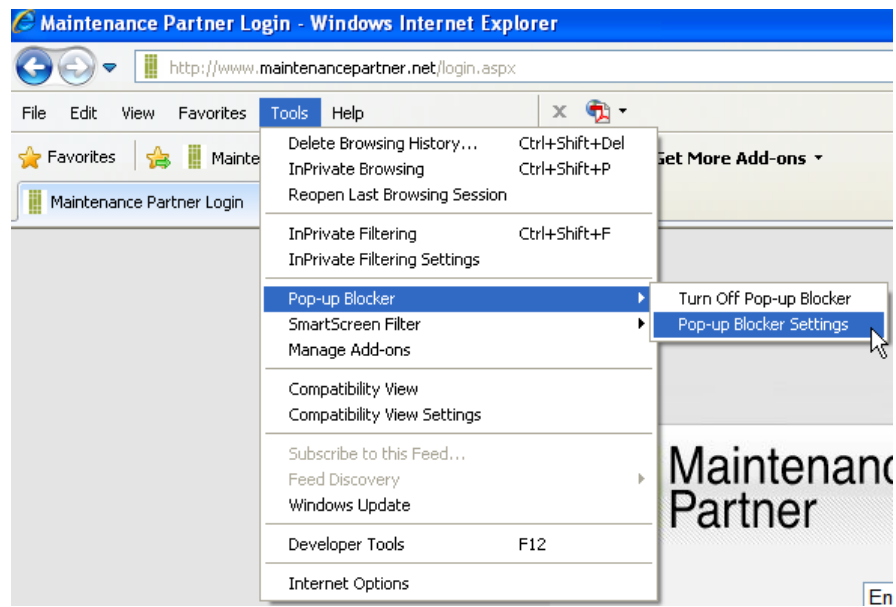
Logging In to Maintenance Partner

The first time you log in to Maintenance Partner you may see a blank screen with the Maintenance Partner logo. If this happens, your browser has blocked the primary Maintenance Partner page as a pop-up window. Listed below are some suggestions about how to remedy this problem.

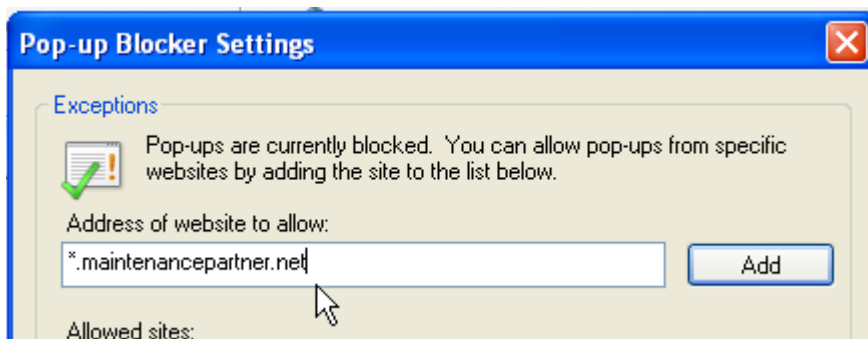
Internet Explorer Browsers

If you use Microsoft's Internet Explorer (IE), you may see a message near the top of the page. Place your cursor inside this message, and right click. You will see several choices. One of them may say "Always allow popups from this site." or similar wording. Click on this option, and then close the browser. Return to www.maintenancepartner.net, and log in again.

If this doesn't take care of the problem or if you don't see this message, go to **Tools** in your browser menu. Click on **Pop-up Blocker** > **Pop-up Blocker Settings**.



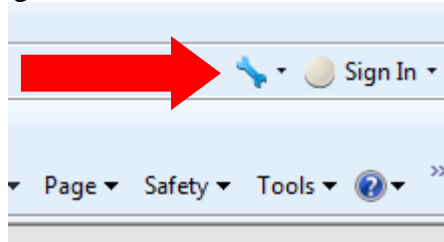
In "Address of website to allow:", type *.maintenancepartner.net, and click **Add**.



Click **Close** and log in to Maintenance Partner once more.

If you use the Google Toolbar for Internet Explorer, it may also block Maintenance Partner.

On the right side of the Google Toolbar, click the Wrench icon pictured below:



A window opens with several tabs on the left. Click the **Tools** tab. If the Pop-up blocker option is checked, un-check it, and click the **Save** button at the bottom of the window.

Please Note: The Mozilla Firefox version of the Google Toolbar does not have a Pop-up Blocker option.

Mozilla Firefox Browsers

If you use Firefox and experience blocked pop-up windows, click the **Tools** menu at the top, and select **Options**. In the Options window, click the **Content** tab.

You can either:

- Un-check the **Block pop-up windows** box.

Or

- Click the **Exceptions** button and enter the web address as shown below.

You can specify which web sites are allowed to open pop-up windows. Type the exact address of the site you want to allow and then click Allow.

Address of web site:

Site	Status
gomjabbar	Allow
evans	Allow

Do not include “www”; otherwise the entire domain is added as an exception.